



IVTG

INUA VILLAGE TO GLOBAL FOUNDATION

SEMI ANNUAL  
**REPORT**

JANUARY — JUNE

2023



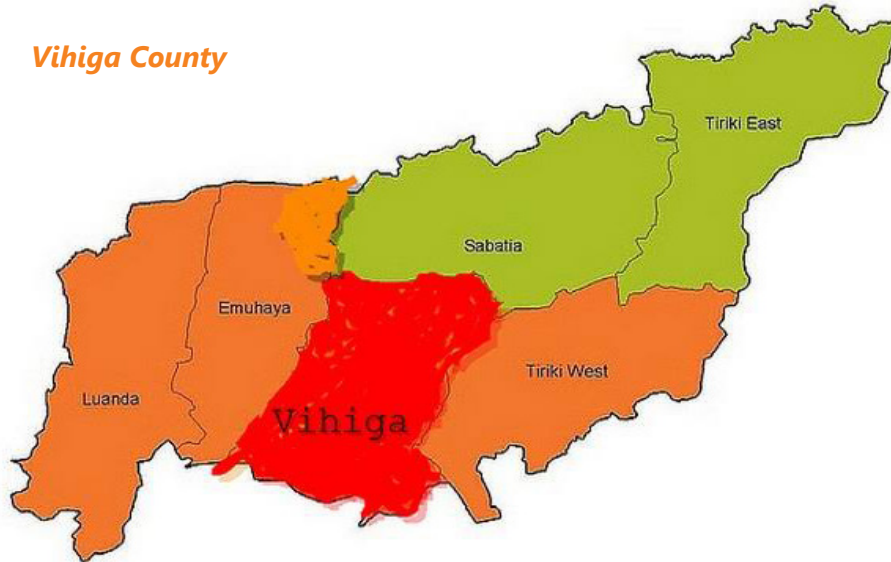


© **Inua Village To Global Foundation**

All rights reserved. No part of this publication may be reproduced, stored in a retrieval system, or transmitted in any form, or by any means, electronic, mechanical, photocopying, recording, scanning or otherwise, without the prior permission in writing of Inua Village To Global Foundation.

# Where We Work

*Vihiga County*



*Kakamega County*



*Nairobi County*



# CONTENTS

*Executive Summary*

*Key Highlights from the Team*

*Education Programme*

*School Feeding Programme*

*Inua Farm-Food Security Program*

*Family Strengthening and Outreach Program*

*Events*

*Financial Report*

*Other Partners & Supporters*

09



10



12

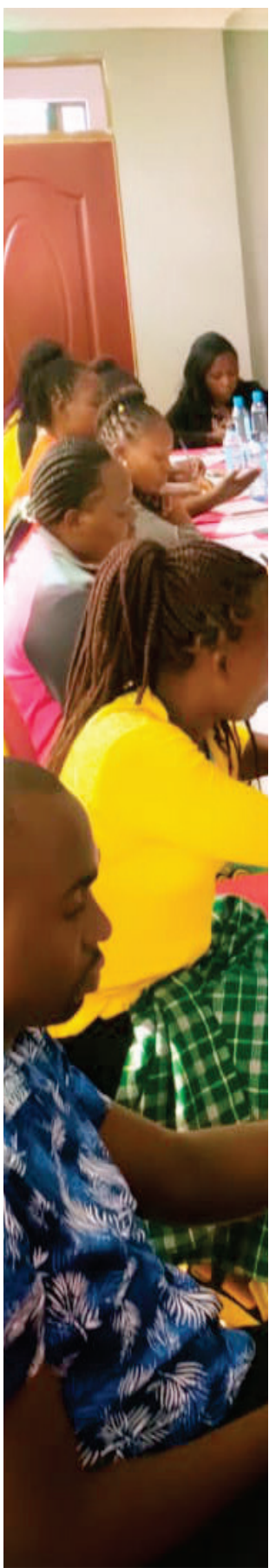


## *List of Abbreviations*

IVTGF	-	Inua Village to Global Foundation
LGS	-	Lucia Global School
VTGAS	-	Village to Global Achievers School
FIGS	-	Furaha Inua Global School
CBC	-	Competency Based Curriculum
MoE	-	Ministry of Education
WFP	-	World Food Programme
KPSA	-	Kenya Private Schools Association



Cover Photo: Inua Farm



## Executive Summary

As a follow-up to last year's expectations, targets, shortcomings and achievement, we began our 2023 with developing quarterly and yearly schedules and targets. This was aimed at helping the organization manage its transition on the implementation of its strategic plan.

We have made significant progress in enhancing our collaboration, program implementation efficiency, and staff welfare. We have actively engaged with our collaborators and partners, who have been instrumental in providing us with valuable support and assistance.

In order to strengthen our team, we have established a close working relationship with our partners, Chris Ouma Consulting and Re-Imagining New Communities, who have provided invaluable support in terms of technical assistance, team training, and facilitating the achievement of our strategic plan. We would also like to acknowledge the significant contribution of the Puppet Interview Programme, who have generously assisted IVTG Foundation in establishing a fully operational guidance and counseling department at FIGS and VTGAS. This department will provide essential skills and techniques to support the well-being of children, teachers and the broader community.

Through our schools, we have been able to create a secure learning environment for both our learners and teachers fostering strong connections with parents and the local community. This inclusive approach has had a profound impact, as we actively prioritize the involvement and integration of everyone within our system.

In light of financial constraints, we have strategically prioritized the implementation of our key programs to ensure optimal resource allocation.

We extend our sincere appreciation to our dedicated staff, partners, consultants and volunteers who have tirelessly worked to address the challenges impacting our learners, and the community. Despite these constraints, we are committed to working diligently around the clock to resolve these issues.

In conclusion, we would like to sincerely appreciate and call upon our esteemed team, community members, friends, consultants, and partners to sustain their unwavering support for our programs.

With this continued support, we can make a lasting and meaningful impact on the lives of our children, shaping a brighter future for all.

## Key Highlights from the Team



**Ernest Njinga**  
C.E.O

**B**esides all the challenges, I take this opportunity to recognize the efforts and commitment from all our team members, partners and supporters. I want to particularly appreciate our management board and school admins for steadily delivering on our mandate as an organization.

Our focus is achieving our long-term vision and we cannot achieve this without collaborations or financial support. Thus, I want to recognize the support we have received so far from:

a) Waldemar, Martina Arnold and Heidrun Seyring through Patoipa Foundation - who have supported us in different

portfolios (Inua farm, feeding programme and school fees at Lucia Global School) and providing other technical support where necessary.

- b) WhoLives organization for funding our water program at Village to Global Achievers Schools by drilling a borehole.
- c) Puppet Interview Programme for funding and supporting our Guidance and Counseling programme.

We also appreciate our communication consultant - Re-Imagining New Communities for their continued support.



**Mercy Simiyu**  
Finance Director

**T**his half year has been a learning curve for the organization, a time to constantly remind ourselves of our mandate in the communities we work in and what kind of change we seek to see.

We extend our sincere gratitude to every individual and organization who supported us both financially and in-kind. This kind of support has ensured that we remain focused on our vision and setting up clear activities to achieve our objectives.

## Key Highlights from the Team



**Shadrack Techera**  
**Program Manager**  
**(Communication and Monitoring)**



**Jacktone Okutoto**  
**Program Manager**  
**(Inua Farm)**

Despite of the challenges in funding, we have made significant steps in streamlining our programs and interventions and this has been achieved through local collaboration with the communities we work with and partners. More efforts have been put to enhancing advocacy work at the local level.

Over the past six months, we have witnessed great improvement in the running and management of the Inua Farm. We have made great strides in diversification of our work and practices. We have also created job opportunities at least 6-10 community members working in our farm on casual basis enabling them to earn an income to support their families.

### *Organizational, Vision, Mission and Core Values*

#### **Vision**

A world of reduced disparity between different classes.

#### **Mission**

Enhancing Opportunities for communities to access quality education by building capacities to achieve equitable sustainable development.

#### **Our Core Values**

Integrity  
Humility  
Discipline  
Equity & Equality

Inua Village to Global Foundation is a non-profit organization registered as a company limited by guarantee. The organization is focused at leveraging on various community resources to help alleviate poverty; provide education opportunities through building of schools and access to quality education thus supporting thousands of poor children in rural and urban settlements; establishing community-based industries to make the community productive and innovative; enhancing agri-business and value-added farming to move families to sustainability and

building community-based cooperatives to promote financial inclusion, growth, and sustainable development.

To achieve the above, we have adopted a community-driven approach, awareness, sensitization, and pooling communities together to utilize their innate power and resources to conquer poverty. We believe in community-led initiatives. Whether it's re-organizing farming to serve the poor farmers, initiating community-driven cooperatives, or starting a community industry- The bottom line is it starts with the community itself.

The organization's main objectives are;

- To build, equip and operate quality community schools that provide quality education to vulnerable communities.
- To operate an effective family and community strengthening programme that provides for emotional, material and psychological wellbeing for families and community.
- To operate an effective food security program that protects the vulnerable communities from extreme hunger and starvation.





## Our work between January and June 2023

### Education Programme

As our core mandate, we have continued to improve our education program for low-income communities in Kayole (Nairobi), Esiamatete Village (Vihiga) and Namunyiri (Kakamega). We support very needy children with high quality education and development programs. These children are carefully mentored by competent teachers and mentors to ensure that they are well equipped. We provide education opportunities from pre-primary to primary schools as well as provision of scholarship support to secondary and college students.



Here are some of the highlights of our work so far;  
Current number of learners across our schools.

SCHOOL NAME	LAST YEAR	TRANSFERRED	CURRENT NUMBER
FIGS	290	69	221
VTGAS	229	202	77
LIGS	143	17	126
<b>TOTAL</b>	<b>762</b>	<b>288</b>	<b>424</b>

SCHOOL	FIGS	VTGAS	LGS
<b>Number of teachers and non-teaching staff</b>	16	13	11

## ***Village to Global Achievers School in Vihiga County***

Through partnership with WHO LIVES the school's WASH program has significantly improved through the drilling of a permanent water borehole which has enabled the setting up of hand washing facilities, access to safe drinking water and proper sanitation and hygiene with the school community.

To ensure an efficient working environment, the school has improved the staff room, bought new printing machines and other essential equipment.



## ***Furaha Inua Global School in Kakamega***

The school participated in zonal musical festivals and athletics where they registered very good results. This was the first time the school was participating in such events.



## ***Lucia Global School in Nairobi County***

The school has had a renovation and repainting that has improved its image and surroundings.

### ***School Feeding Programme***

Due to the high cost of living and drop in our funding, we have had to cut on the feeding program across all the schools. However, we managed to provide the following cups of porridge and plates of food;

- FIGS - Served approximately 22,890 cups and 7,947 plates.



- VTGAS - Served 33,840 cups and 29,400 plates.
- LIGS - Served 14,400 cups.

Total number of cups served = 71,130

Total Number of plates served = 37,347



## Donations

We have received donation (in terms of food, toothbrush and paste) from Who Lives, Cornelia Werner and Colgate

## Inua Farm-Food Security Program

The goal of the Inua Farm is to ensure that IVTGF produces diverse and sufficient food for the schools and local market, and support smallholder farmers by placing great emphasis on food security and eradication of extreme hunger and poverty.

Over the past six months, we have had a tremendous improvement in our work, diversifying our farming practices to ensure that we provide sufficient food for our entire ecosystem. We set aside two acres of land where we have planted collards (sukumawiki), spinach, crotalaria (Mito), spider plant (saga), cabbage, onion grass, amaranthas (terere), African nightshade (managu), kanjila and cowpeas (Kunde).





We have expanded our banana farming by planting over 30 new stems and banana varieties that we anticipate to improve on our yield. We have two cows that are expectant and in the next month, they should be calving thus improving our milk supply.

We successfully set up nine (9) kitchen tower bags serving as demo farms for local farmers who have been able to purchase and set up their kitchen farms for them to be vegetable secure.

We have established a bee-keeping section that aims at producing honey for the local market. We have already constructed an "Apiary" this has the capacity to host close to 30 beehives.

**Employment Opportunities-** We have been able to create job opportunities for 10 community members on a casual basis making them able to earn an income to support their families.

Existing opportunities for Inua Farm:

- Readily available local market for the farm produce.
- Availability of land and labor force.
- Low transportation cost as people walk direct to the farm to purchase.
- Diversity of farming activities that are sustainable and income generating.
- Opportunity for local farmers and community to learn and gain different farming skills that are economical and affordable for them to practice in their homes.

## ***Family Strengthening and Outreach Program***

Family strengthening and community care is a very critical aspect of our work. Through this program, we help families to meet their material, educational, and emotional needs. We employ strategies that focus on livelihood and material support, medical care, and mental health support, microloans and savings programs, food and agricultural support.

Since the start of the year 2023, we have provided psycho-social support to families living within our communities. We have also hired a trained social worker who is supporting our learners, teachers and community members. She is able to engage them and understand the challenges that they face at school and back at home.

Through this program, we have had an opportunity to engage with the local administrators and other community organizations to discuss and address issues affecting Ebukanga Location.

## ***Staff and Teachers Training***

We are very keen on the self and collective development of our staff members. We provide platforms where they can be supported to improve their well-being and equipped with the right information and skills to carry out their work.



Through the support of our partners Re-Imagining New Communities, Weza Care Solution and Puppet Interview Programme we have held a total of 6 training and learning sessions for our staff and teachers.

Weza Care Solution held a three day's training which focused on;

- Preparing children for re-integration.
- Psycho-social helping skills.
- Talking with families in crisis.
- Child status index and self-care.

Re-Imagining New Communities (through its Children-Led Community Peace Labs Program) held a three days learning workshop for teachers from Vihiga and Kakamega. Three of our teachers participated in the entire program. The workshop focused on conflict resolution, communication and peacebuilding. The organization held three other mentorship sessions with VTGAS and FIGS teachers as well as our staff members.

Following consultative meetings between Inua Village to Global Foundation and Foundation

PIP on the need and benefits of having a functional guidance and counseling department across all the IVTGF schools, the two organizations agreed to collaborate on the development child protection policy and hold training for teachers and other IVTGF stakeholders. The training is focusing on the Introductory Basic Counselling course that would equip the teacher counselor with counselling skills that views the child in a holistic manner. This year engagement will focus on supporting 6 teachers and 6 community collaborators.

Since January, we have held 6 mentorship, coaching and capacity building sessions for all the IVTGF staff members and teachers. These sessions were facilitated by JeMs of Hope through our 'Inspired Program' partnership.



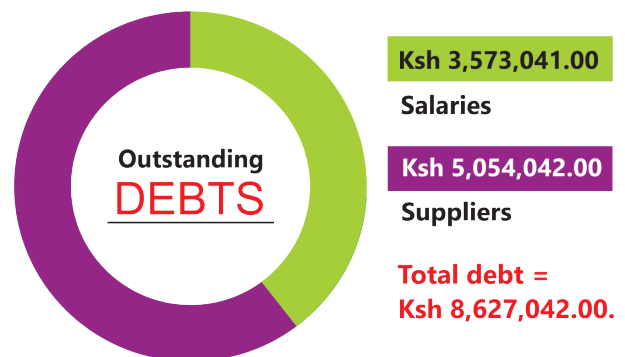
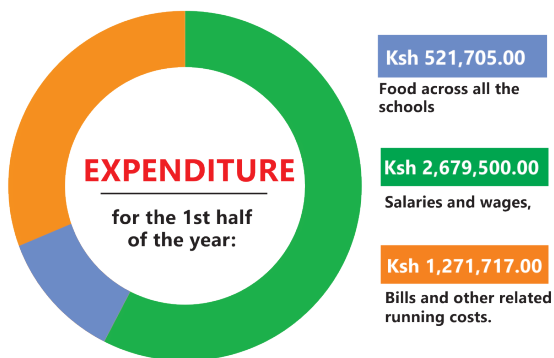
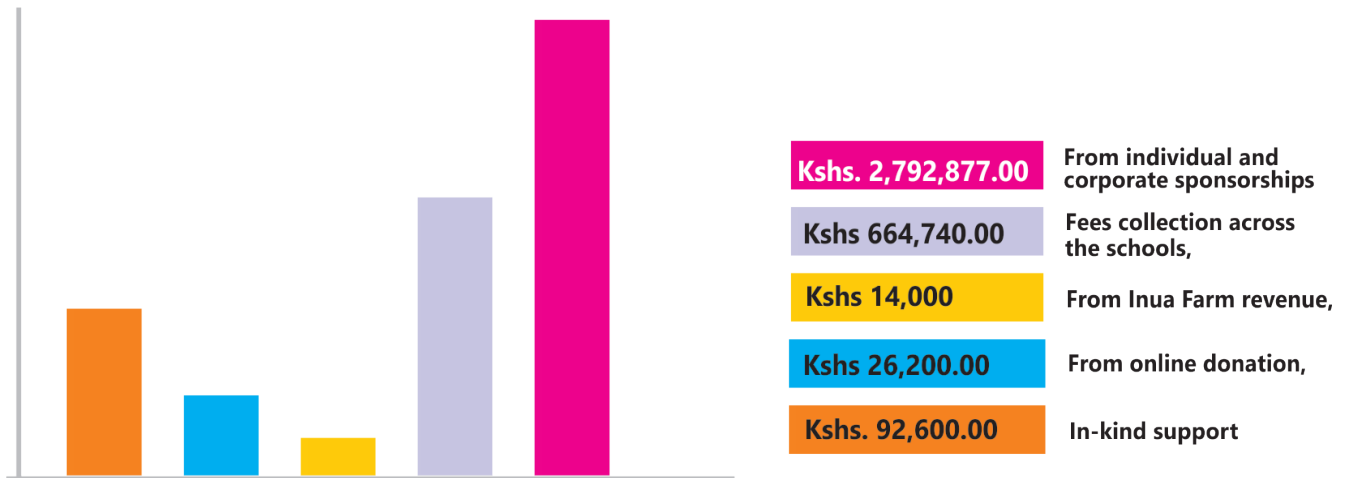
## EVENTS

This year we joined the rest of the world in marking celebrating the below international days:

1. World Environmental day on 5<sup>th</sup> June 2023, under the theme- **#BeatPlasticPollution.**
2. Day of African child on 16<sup>th</sup> June 2023, under the theme- **Rights of Child in The Digital Environment**
3. World Health Day on 7<sup>th</sup> April 2023 under the theme- **Health for All**

## FINANCIAL REPORT

During the 1st half of 2023, we have managed to raise:



## OUR PARTNERS & SUPPORTERS SO FAR!



### Patoipa Foundation

Patoipa has a vision and dream that PSF grows to be one of the most reliable and well managed scholarship funds in Africa, in our unwavering endeavors to be a beacon of hope to the youths in Africa.



### Thriving Green Foundation

Thriving Green is a social business that aim to grow spirulina in Kenya. The organization aims to protect and enhance green spaces so that they benefit people today and in long term.



### JeMs of Hope

JeMs' vision is to inspire educational empowerment and foster a positive mindset that empowers individuals to pursue happiness in their future endeavors. The organization envisions a world where every individual, regardless of their background or circumstances, has the opportunity to access quality education and develop the necessary skills to lead a fulfilling and purpose-driven life.



### Puppet Interview Programme

Puppet Interview Programmes is a duly non-profit organization duly registered in Kenya, that aims to support charities who work with vulnerable children and families, by providing tailor-made training courses with a systemic-contextual and solution-focused approach to equip practitioners/teacher counsellors with the relevant knowledge, techniques and skills on psycho-social issues.





### **WHO Lives Foundation**

The WHOlives Community-Funded Well Program promotes sustainable self-reliance for local villages instead of more dependency.



### **Re imagining New communities**

Re-Imagining New Communities is a peacebuilding and communication organization focusing on training, communication consultancy and capacity building for schools, churches and grassroots organizations.



### **Chris Ouma Consulting**

CO Research and Consulting Limited (COC) is a consulting firm that specializes in research, mentorship and organizational capacity development.



**INUA VILLAGE TO GLOBAL FOUNDATION**



[www.villagetoglobal.org](http://www.villagetoglobal.org)

[info@villagetoglobal.org](mailto:info@villagetoglobal.org)

Office: +254 101030323

**Esiamatete Village, Ebukanga, Vihiga County**